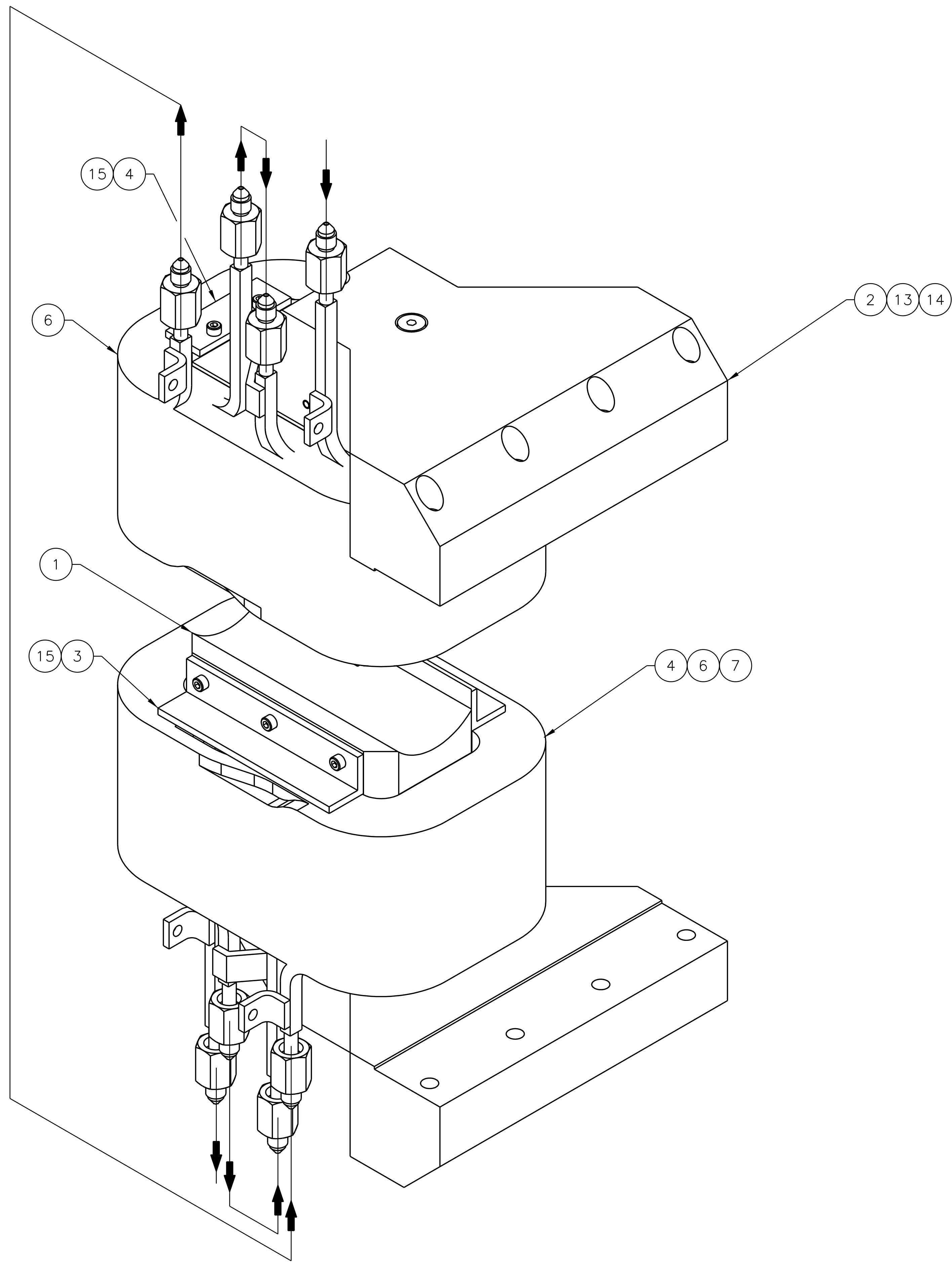


REVISION HISTORY				
ZONE	REV	DESCRIPTION	DATE	APPROVED



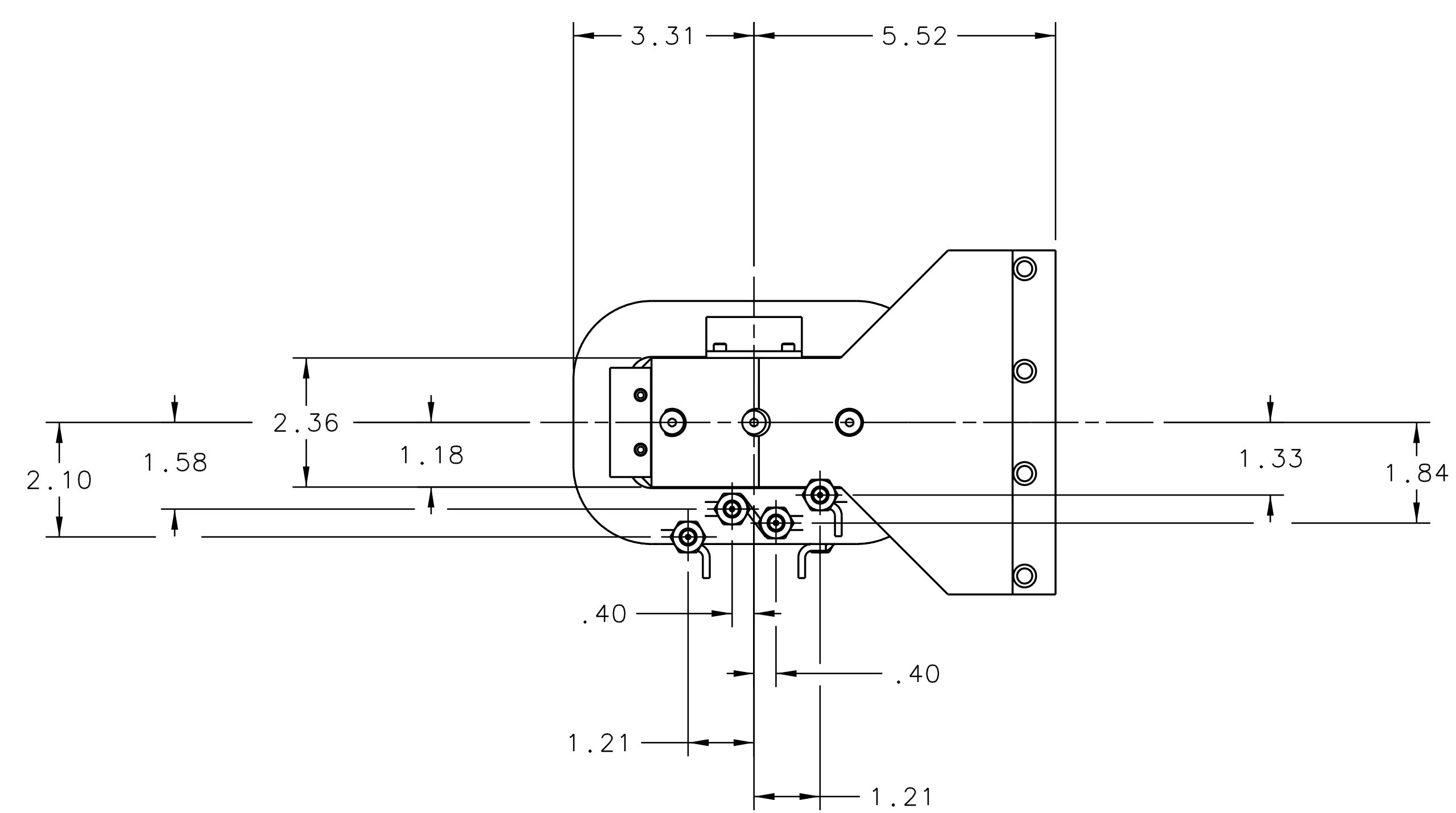
ISO VIEW 1-6C
SCALE FULL

NOTES:
1. APPROX. WEIGHT 84 LBS.

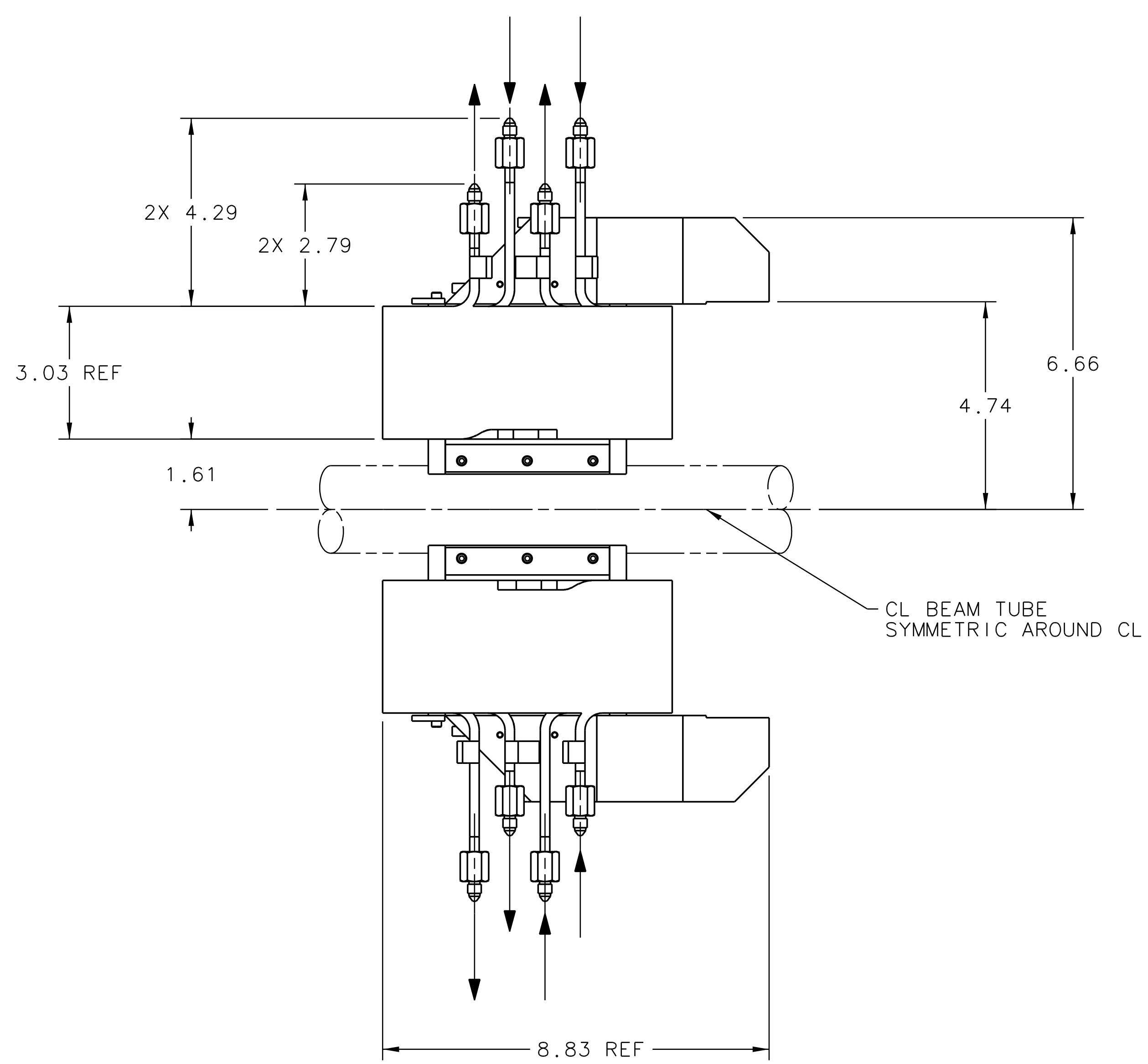
QTY	ITEM NO.	PART OR IDENTIFYING NO.	DESCRIPTION OR IDENTIFYING NO.	MATERIAL	NOTES
20	15	FASTENAL 23803 OR EQ	SHCS #6-32 X .375 IN LG	BLACK OXIDE STEEL	-
4	14	FASTENAL 26191 OR EQ	SHOULDER SCREW .312 X 2.25 X 1/4-20 THD	BLACK OXIDE STEEL	-
2	13	FASTENAL 26316 OR EQ	SHOULDER SCREW .312 X .75 X 1/4-20 THD	BLACK OXIDE STEEL	-
-	12	-	-	-	-
-	11	-	-	-	-
2	10	A10009-04-01-0200	COIL BRAZEMENT	COMPOSITE	-
-	9	-	-	-	-
2	8	A10009-04-01-0108	BRACKET SHORT	ALUMINUM	-
4	7	A10009-04-01-0007	FRONT-BACK COIL SHIM	G-10	-
4	6	A10009-04-01-0006	SIDE COIL SHIM	G-10	-
-	5	-	-	-	-
2	4	A10009-04-01-0004	COIL RETAINING CLIP	ALUMINUM	-
4	3	A10009-04-01-0003	BRACKET	ALUMINUM	-
2	2	A10009-04-01-0002	IRON YOKE	1006 STEEL	-
2	1	A10009-04-01-0001	IRON POLE	1006 STEEL	-

DOCUMENT CONTROL STAMP	DIM & TOL PER ASME Y14.5 UNLESS OTHERWISE SPECIFIED DIMENSIONS ARE IN INCHES FRACTIONS ARE # N/A X ± .01 ± .005 DECIMAL ANGLES X ± .1 ± .50° XX ± .01 ± .50°	TRACKING NO. N/A	United States Department of Energy Jefferson Lab Thomas Jefferson National Accelerator Facility Newport News Virginia
MATERIAL SEE PARTS LIST	THIRD ANGLE PROJECTION	APPROVALS J. MILLER CHECKED OZMARIS	HALL A - EXP E10009 APEX MAGNET - DIPOLE BEAM TO DUMP SEPTA MOUNT APEX DIPOLE BEAM TO DUMP CORRECTOR US
FINISH MACHINED SURFACES DEBURR & BREAK ALL SHARP EDGES UNLESS OTHERWISE NOTED DO NOT SCALE DRAWING		APPROVED APPROVED	SIZE (DWG. NO.) E A10009-04-01-0000 SCALE 1:2 (SEE DWG. NO. A10009-02-00-0100) SHEET 1 OF 2

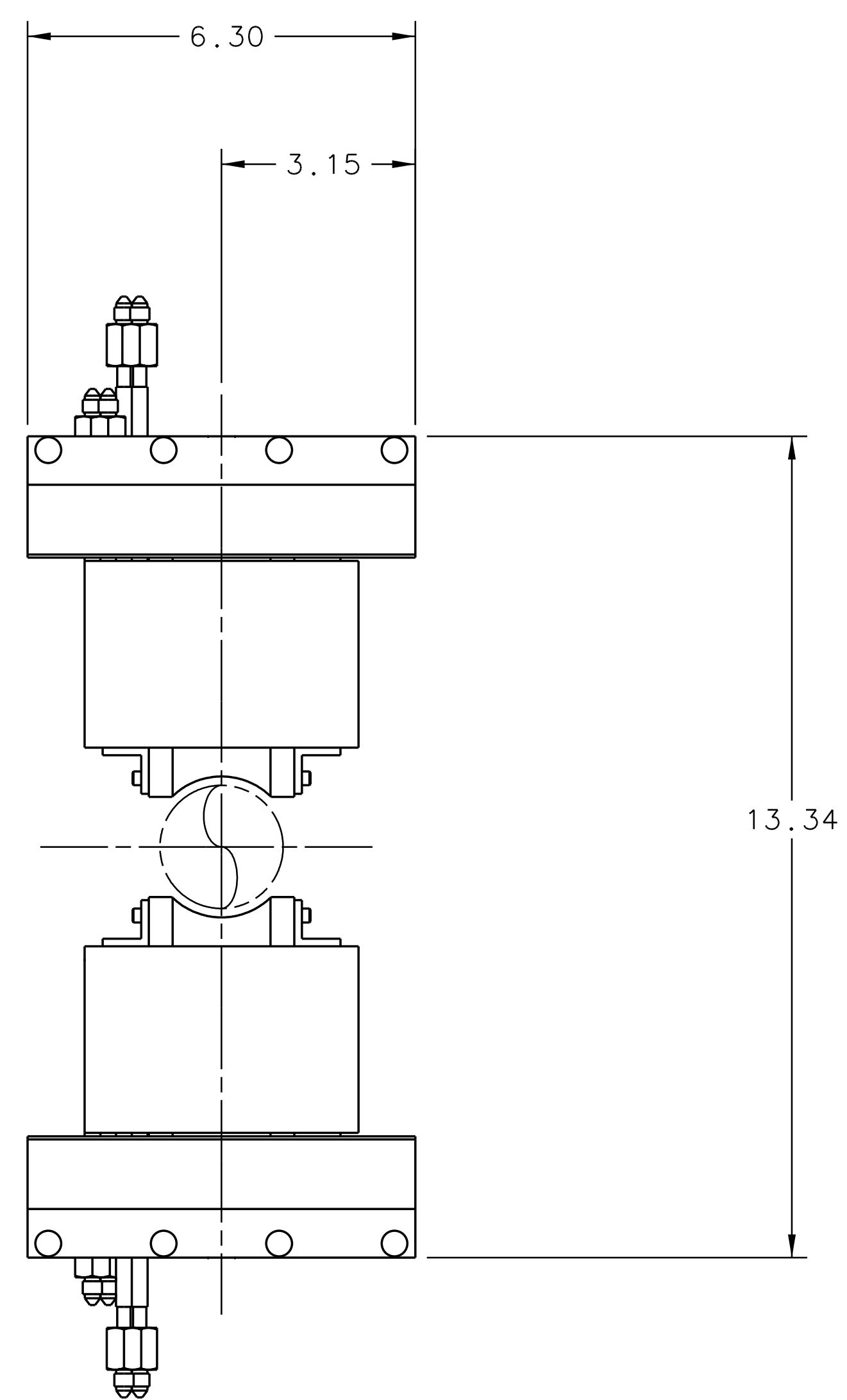
IN ACCORDANCE WITH THE JEFFERSON LAB ESH&Q MANUAL
SUBJECT MATTER EXPERT (SME) SIGNATURES MAY BE REQUIRED.



TOP VIEW 2-7F



FRONT VIEW 2-7B



RT SIDE VIEW 2-4B