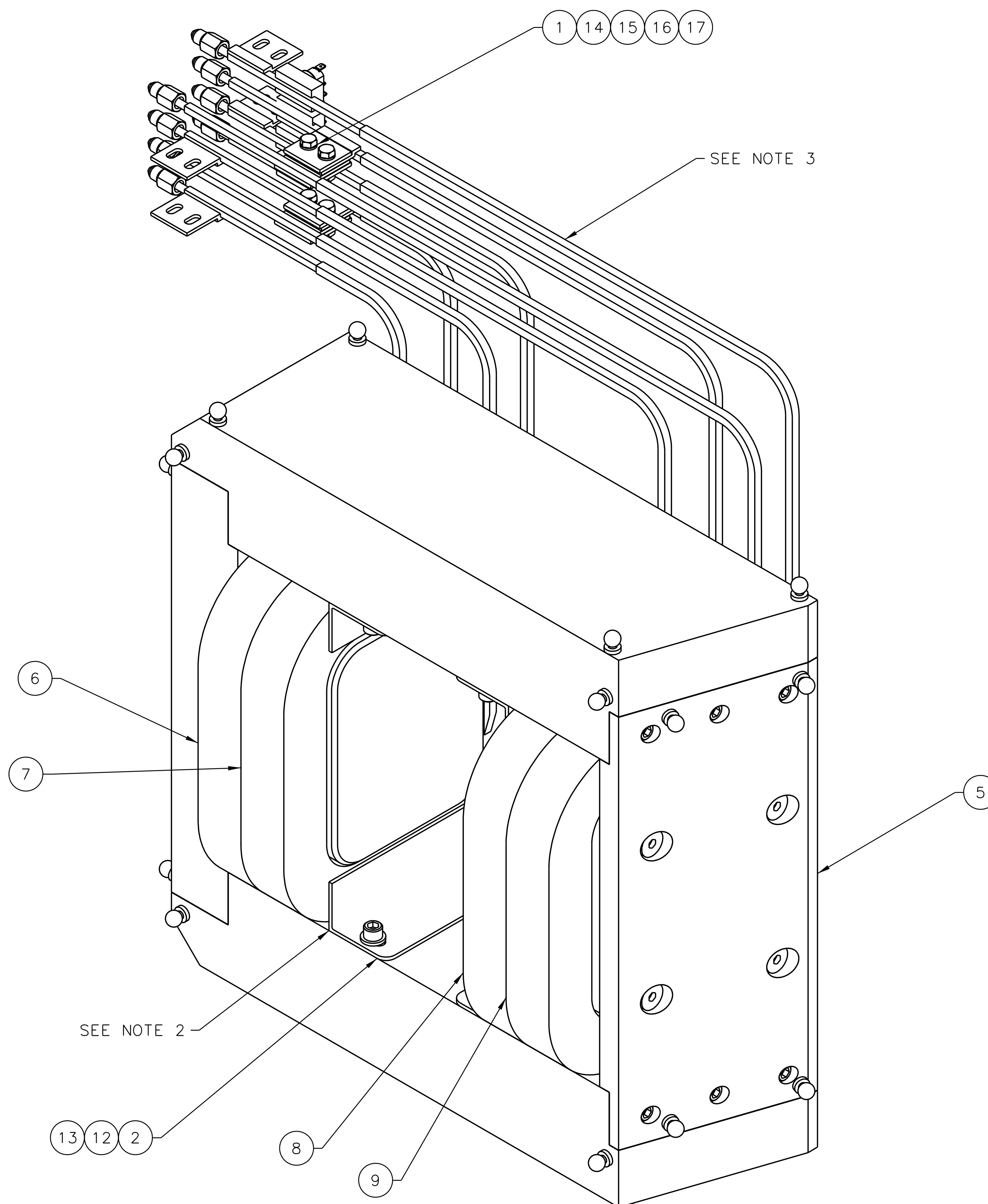


REVISION HISTORY				
ZONE	REV	DESCRIPTION	DATE	APPROVED



ISO VIEW 1-6C

- NOTES:
1. APPROX. WEIGHT 600 LBS.
 2. ANY PLACES WHERE THERE IS A GAP BETWEEN THE COILS AND THE METAL MOUNTING BRACKETS, THE VENDOR SHOULD PROVIDE A G-10 OR PHENOLIC SHIM.
 3. LEADS WILL BE CLAMPED AND SUPPORTED AT FINAL INSTALLATION IN HALL A AT JEFFERSON LAB.

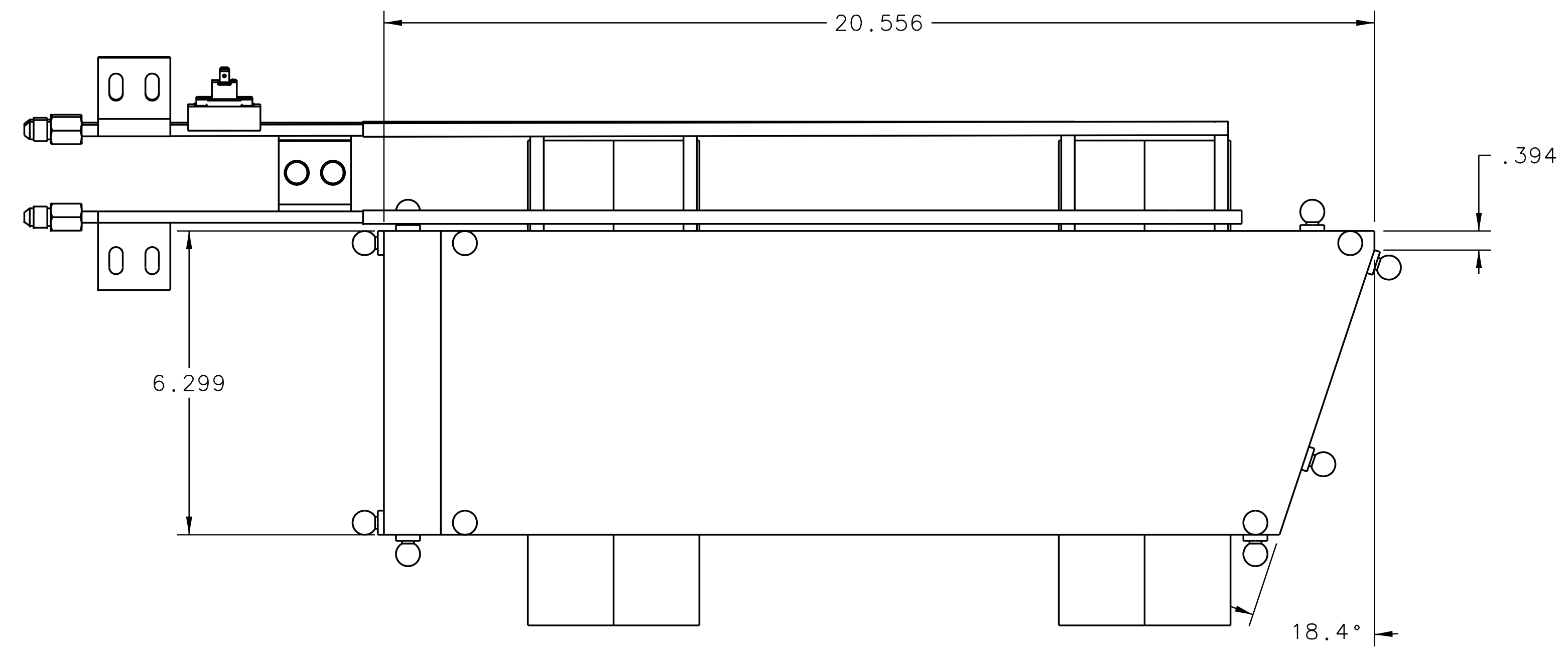
QTY	ITEM NO.	PART OR IDENTIFYING NO.	QUANTITY PER OR DESCRIPTION	MATERIAL SPECIFICATION	NOTES
4	17	FASTENAL 78063 OR EQ	WASHER SPLIT LOCK 1/4 NOM DIA	STAINLESS STEEL	-
4	16	FASTENAL 78013 OR EQ	WASHER FLAT 1/4 NOM DIA	STAINLESS STEEL	-
4	15	FASTENAL 77710 OR EQ	HEX NUT 1/4-20	STAINLESS STEEL	-
4	14	FASTENAL 77005 OR EQ	SCREW HEX HD CAP 1/4-20 X 1 IN LG	STAINLESS STEEL	-
8	13	McMASTER CARR 98370A019 OR EQ	WASHER 3/8 NOM	STEEL	-
8	12	FASTENAL 23305 OR EQ	SHCS 3/8-16 X 1 IN LG	STEEL	-
-	11	-	-	-	-
-	10	-	-	-	-
1	9	A00000-04-00-3200	COIL ASSEMBLY C	COMPOSITE	-
1	8	A00000-04-00-3100	COIL ASSEMBLY C	COMPOSITE	-
1	7	A00000-04-00-3000	COIL ASSEMBLY B	COMPOSITE	-
1	6	A00000-04-00-2900	COIL ASSEMBLY A	COMPOSITE	-
1	5	A00000-04-00-1300	IRON ASSEMBLY US	COMPOSITE	-
-	4	-	-	-	-
-	3	-	-	-	-
4	2	A00000-04-00-1002	COIL MOUNTING BRKT	ALUMINUM	-
4	1	A00000-04-00-1001	ENTRANCE SPREADER	STAINLESS STEEL	-

UNITED STATES DEPARTMENT OF ENERGY
Jefferson Lab
 Thomas Jefferson National Accelerator Facility
 Newport News, Virginia

HALL A - SBS PROGRAM
 MAGNET - DIPOLE
 SHIELDED BEAMLINE SBS
 CORRECTOR DIPOLE ENTRANCE

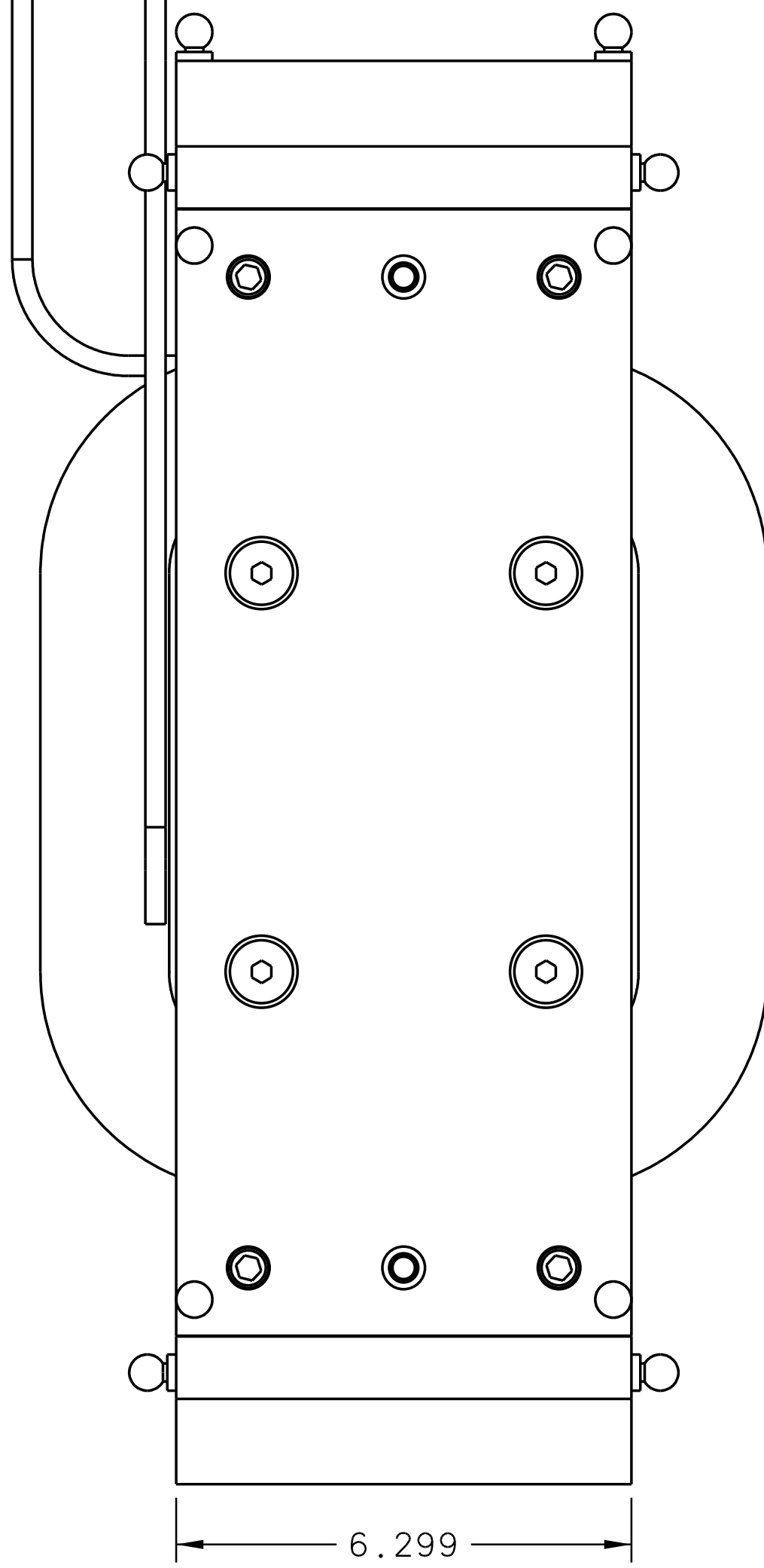
SCALE: 1:2 (SEE DWG. NO. A00000-04-00-1000) SHEET 1 OF 2

8 7 6 5 4 3 2 1

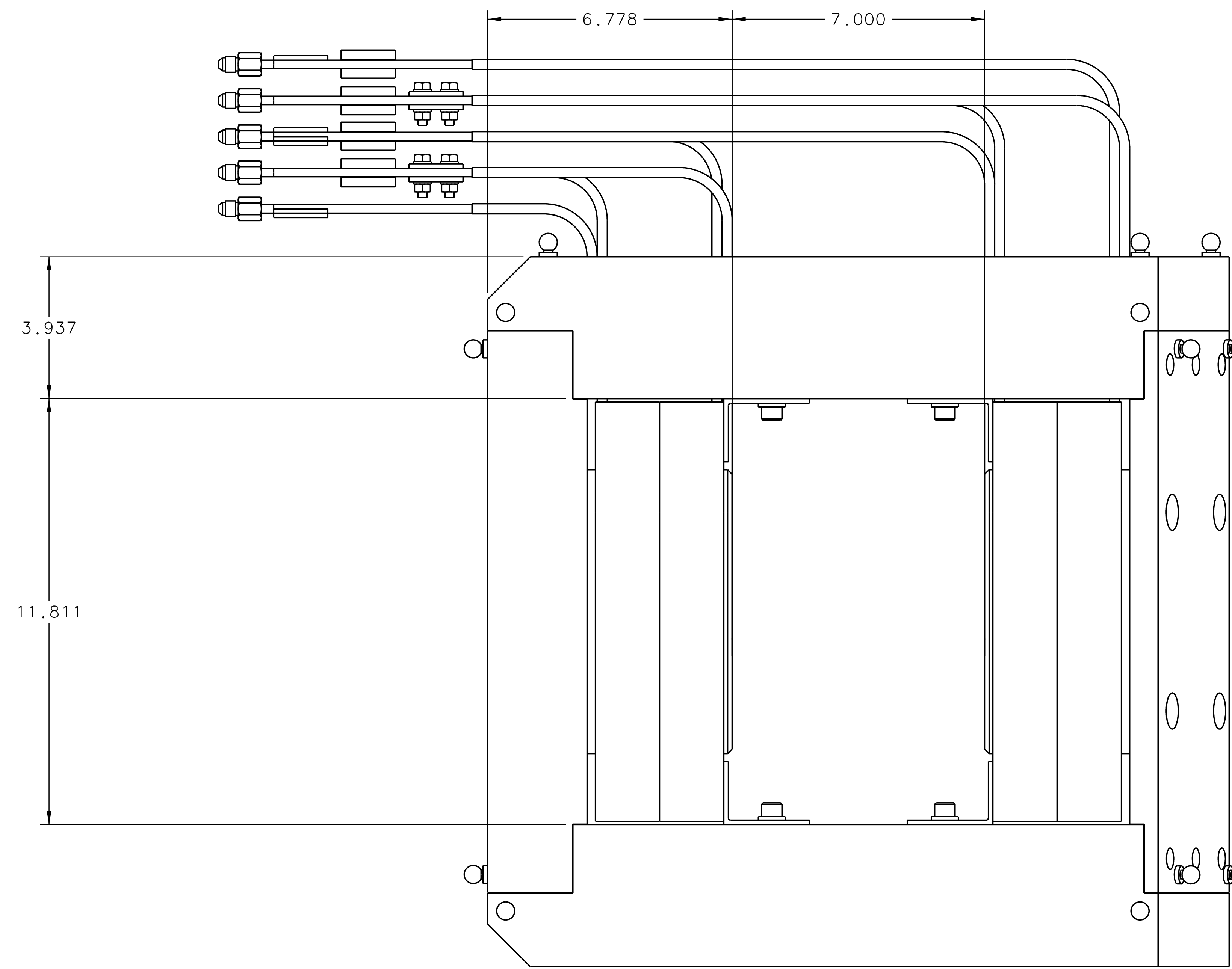


TOP VIEW 2-3G

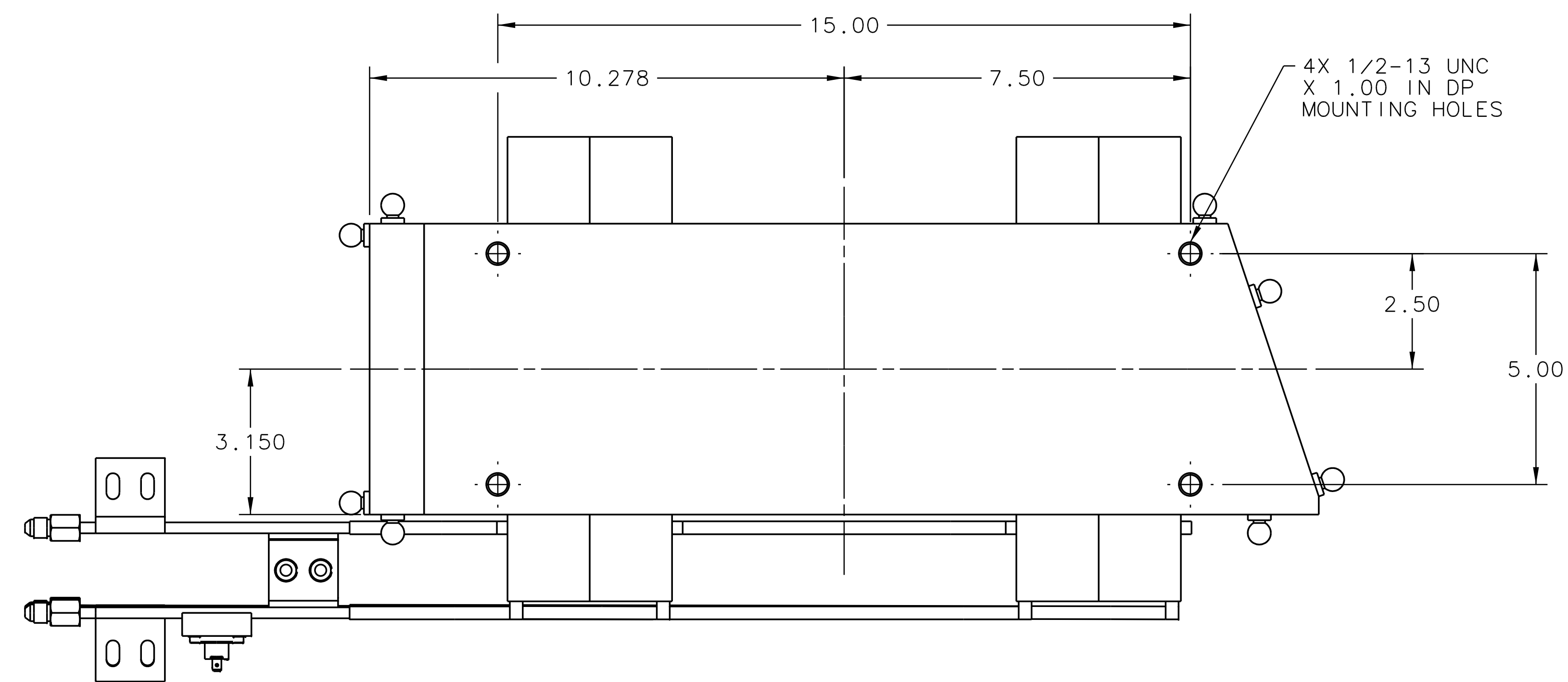
- WATER OUTLET COIL D
- WATER OUTLET COIL C
- WATER OUTLET COIL B
- WATER OUTLET COIL A
- WATER INLET COIL D
- WATER INLET COIL C
- WATER INLET COIL B
- WATER INLET COIL A



SIDE VIEW 2-7D



FRONT VIEW 2-3D



BOTTOM VIEW 2-3A

DOCUMENT CONTROL STAMP	SIZE DWG. NO.	REV.
E	A00000-04-00-1000	-
SCALE 1:2	ISS IN ASSY NO. A00000-02-08-0000	SHEET 2 OF 2

8 7 6 5 4 3 2 1