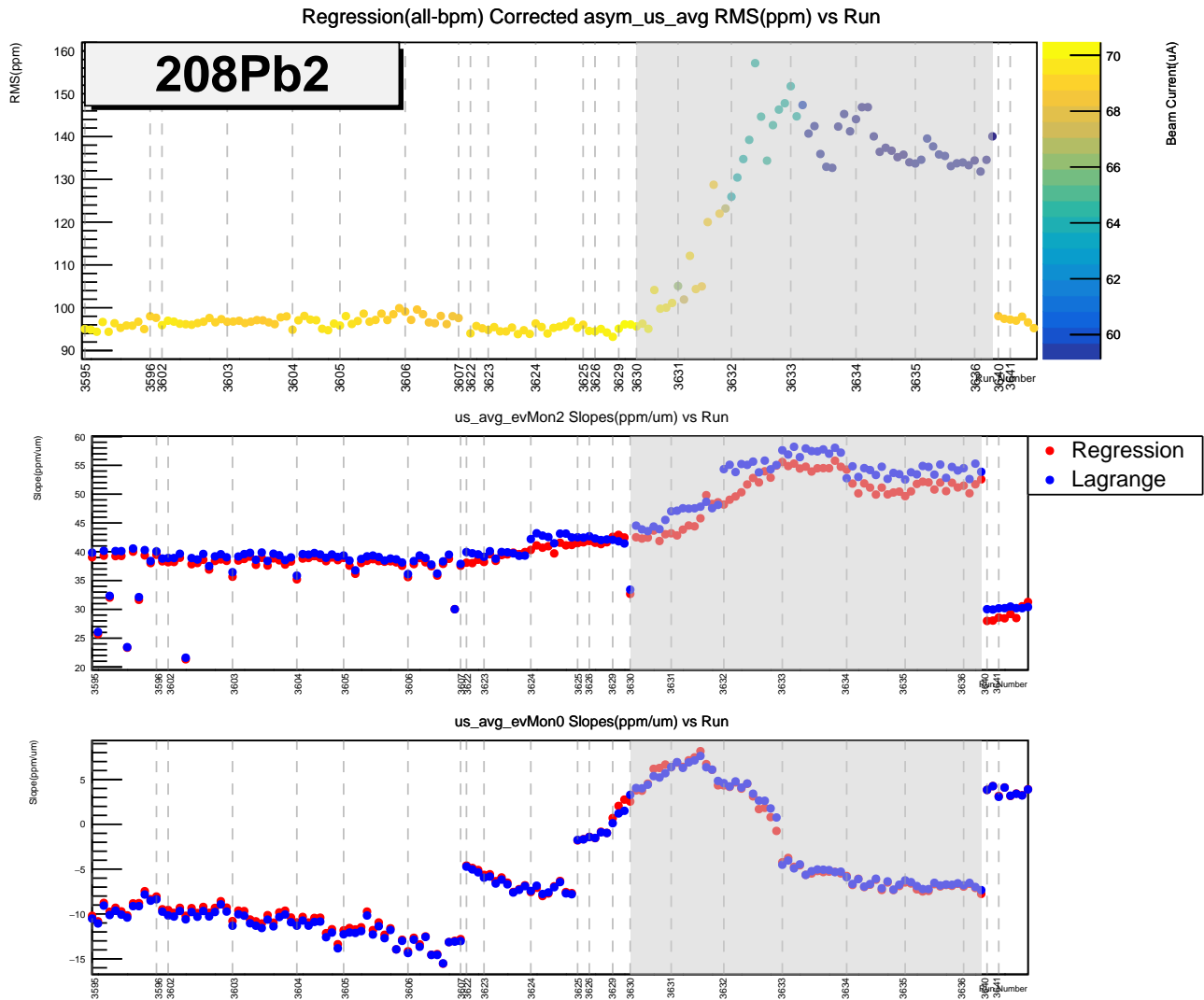


Filter for End-of-Target-Life Runs

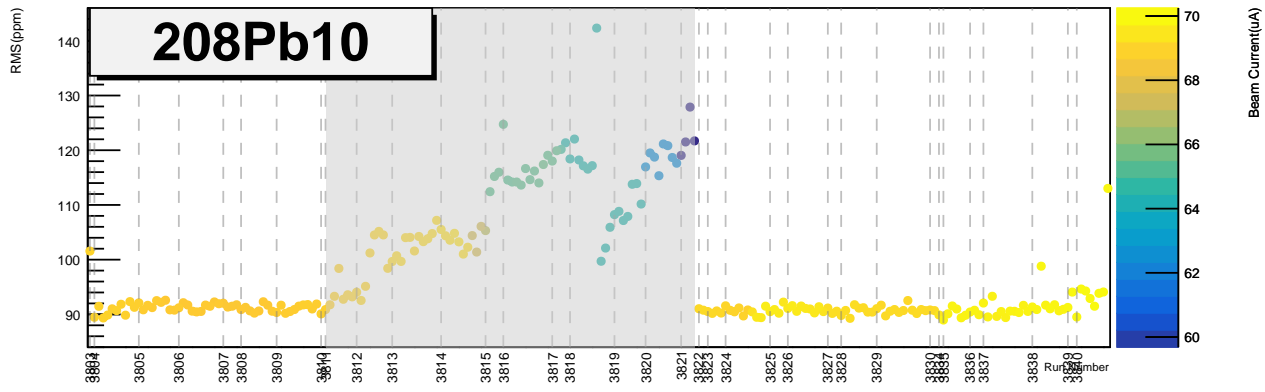
tao.ye@stonybrook.edu

September 30, 2020

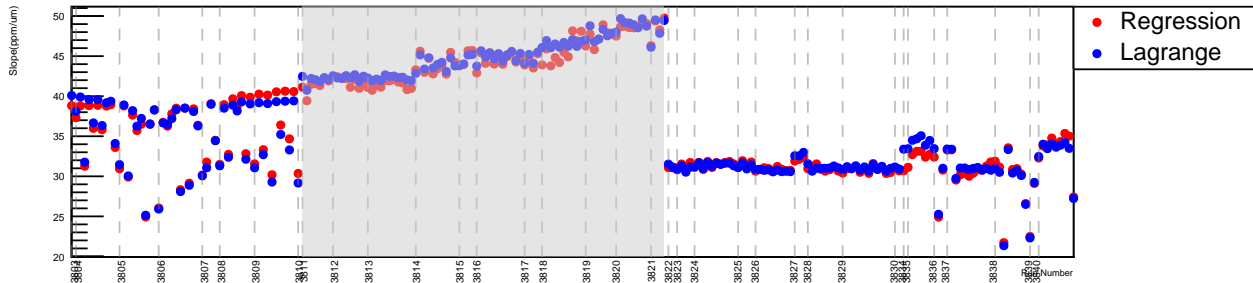
1 History



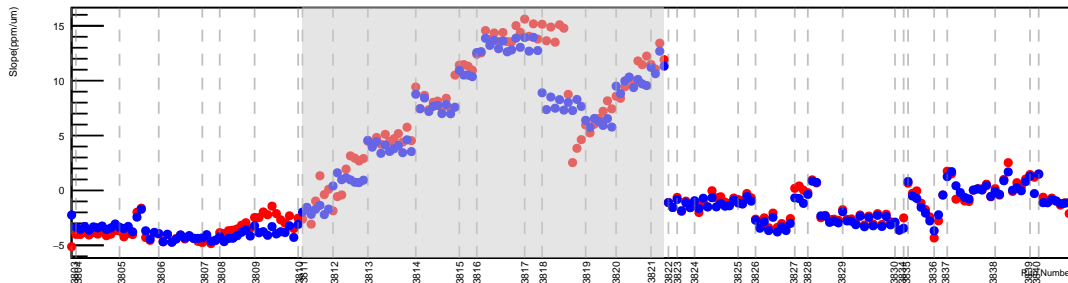
Regression(all-bpm) Corrected asym_us_avg RMS(ppm) vs Run

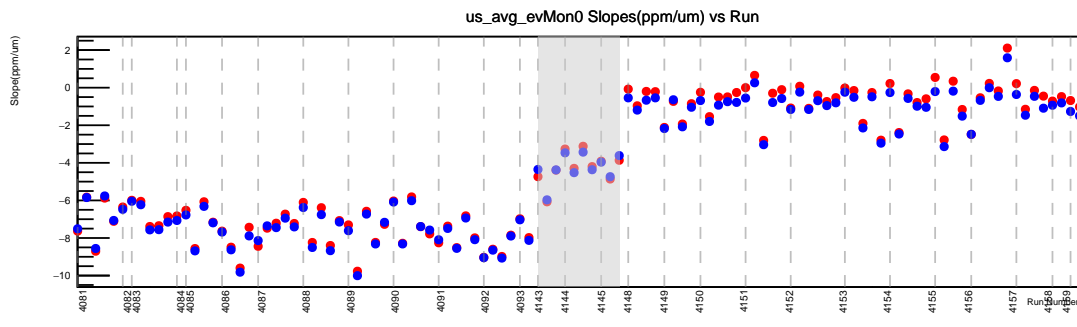
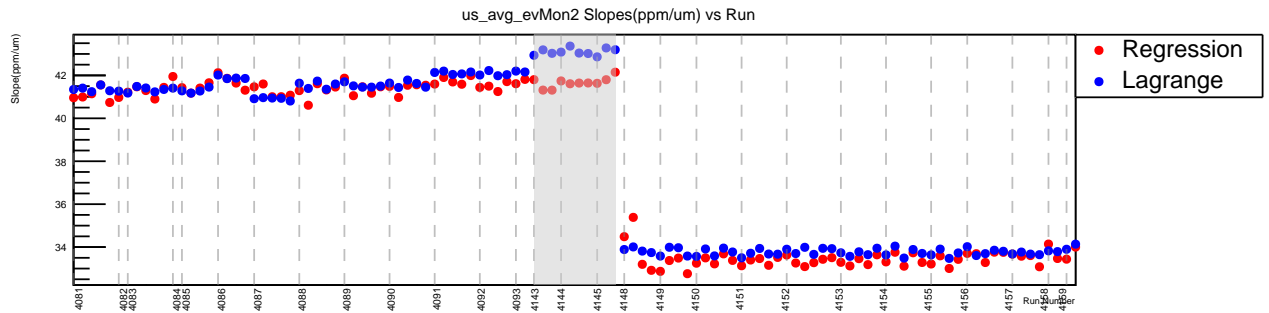
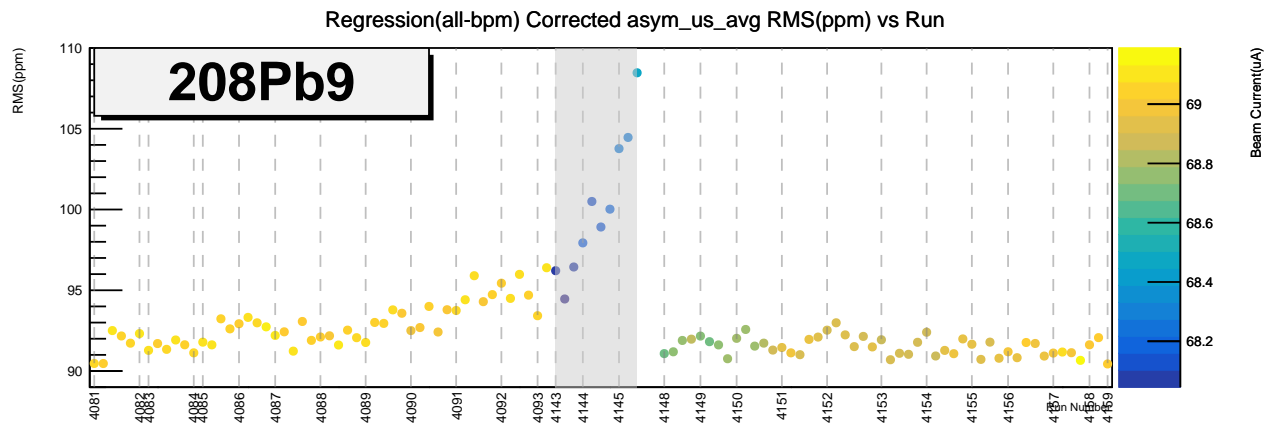


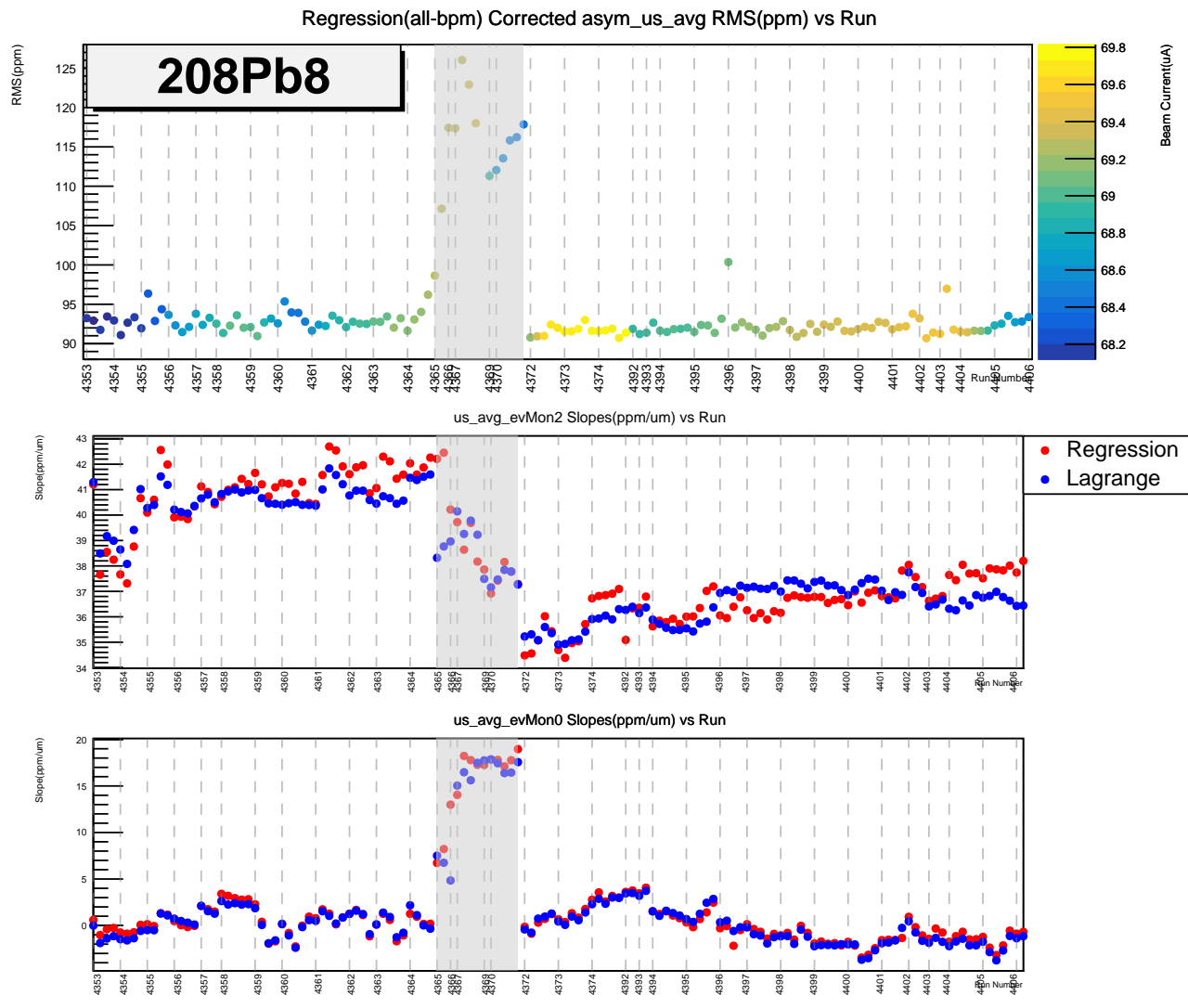
us_avg_evMon2 Slopes(ppm/um) vs Run



us_avg_evMon0 Slopes(ppm/um) vs Run







2 Runlist

Slug	Run Number	Patterns
13	3630	66144
13	3631	83195
13	3632	93165
13	3633	106198
13	3634	98889
13	3635	94590
13	3636	40718
27	3811	65075
27	3812	78142
27	3813	102201
27	3814	98764
27	3815	37306
27	3816	99239
27	3817	38705
27	3818	93447
27	3819	71495
27	3820	76681
27	3821	38998
45	4143	34619
45	4144	42513
45	4145	27390
58	4365	26452
58	4366	10654
58	4367	42686
59	4369	14511
59	4370	47167
	Total	1628944 ~15.08 Hour

3 Grand Averages

	Mean(ppb)	Error(ppb)	RMS(ppm)
Lagrange(all)	492.69	13.38	100.42
Regression(all)	493.48	13.29	99.35

Table 1: previous results

	Mean(ppb)	Error(ppb)	RMS(ppm)
Lagrange(all)	491.74	13.52	99.61
Regression(all)	492.58	13.44	98.69

Table 2: With Filter cuts